

# DOMAIN NAME PORTFOLIO MANAGEMENT

# DOMAIN PUNCH PROFESSIONAL

SOFTNIK TECHNOLOGIES

<http://www.softnik.com/>

# Table of Contents

What is Domain Name Portfolio Management?	6
What can you do with Domain Punch Professional?	6
The basic screen layout	8
Adding Domain Names	9
Adding or Importing Domain Names Manually	9
Enter only valid domain names	9
Importing domain names from a text file or from the older DMS (v1) files.	10
Creating Domain Names in Domain Finder	10
Domain Names From Keywords	11
Creating Domain Names from Templates	11
Internationalized Domain Names (IDN)	11
Looking up Domains	13
Adjusting lookup speeds	13
Simultaneous Connections	14
Connection Interval	14
Query Limit at Various whois servers	14
Over-riding the whois connection settings	15
Configuring Whois Servers	16
Number of simultaneous "Max Connections"	16
Connection Interval	17
Adding Support for new Country Code Domains	17
Essential Whois Server Setup	17

Domain Availability String Token	18
Resetting changes made to whois configuration	18
Advanced Whois Server Configuration	19
Advanced String Tokens For Data Extraction	19
<b>Web Based (http, port 80) Whois</b>	<b>20</b>
Why would you need http based whois?	20
<b>Whois Usage Restrictions</b>	<b>21</b>
Problems with too many unrestricted lookups	21
Doing Whois Lookups, the right way	22
<b>Domain Whois Lookups Not Working?</b>	<b>23</b>
The registrar's whois server is temporarily down.	23
There is a network problem at your ISP or some where else.	23
The whois connection to the server is timing out	23
The registrar's whois server is blocking connections from your computer.	23
The registrar's whois server is blocking connections from your ISP.	23
You have a firewall / proxy server setting that is preventing connections to the registrar's whois server.	24
You have a software configuration / setup error	24
<b>Domain Categories</b>	<b>25</b>
Renaming Domain Category Names	26
Domain Category Editor	26
<b>Domain Alerts, Web-scripts and more...</b>	<b>27</b>
Domain Alerts	27
Domain Record Change Logs	27
Sample PHP Web Script	28

Simple Website Monitoring - Automatically Monitor Domain Home Pages and Check For Specified Text Tokens	29
Specify The "String To Search For" For Each Domain	29
The "Page Token Found" Column	29
Enable the display of "Page Token Found" Column	30
Redirected Domains	30
Domain Alert if the Search Token is Not Found	30
Adding HTTP Search Tokens in Bulk	31
Importing HTTP Search String Tokens From a CSV File	31
Web Page Redirect Monitoring	32
Domain MX Record / Mail Server Monitoring	32
Lookup Queue and On-screen Legends	33
Lookup Queue	33
Problems when extracting Expiry Dates	34
If the expiry date/creation date is inaccurate or is missing...	34
Manually Entering / Editing Data	35
Domain Details (Property) View	35
Write Protecting Manually Edited Domain Data	35
Identifying modified and or write-protected domain records	35
Web Forms Manager - Quick Access To Domain Registrar & Hosting Accounts	37
What is Web Forms Manager?	37
How To Access Web Forms Manager?	37
Adding Your own Merge Fields	38
Limitations and a Warning!	38
Checking the POST Data	38

Saving, Loading Files, Copying and Exporting Data	39
Backing up your work	39
Copying Data to Clipboard	40
Exporting / Printing Data	40
Backup Whois Settings	40
Diagnostic Port 43 Whois Tool	41
Getting Additional Help / Support	42
<i>Blog URL</i>	42
<i>Contact Us</i>	42
<i>Domain Punch Professional Software Updates</i>	42
SEO Lab Professional	42

---

## What is Domain Name Portfolio Management?

---

Domain Portfolio Management is the process of organizing, managing and monitoring all your Internet domain names. Domain names are a very important business asset that have to be protected. It is also important to keep track of the various websites corresponding to the domains. **Domain Name Portfolio Management** makes it easy to do this and more from a single interface.

You can use any one of the following 3 products to manage your domain name portfolio.

1. **Watch My Domains Professional** (for basic domain name management, for individuals and small businesses)
2. **Domain Punch Professional** (advanced domain name management for businesses)
3. **Watch My Domains ISP** (more advanced domain name management with a database back-end and support for SQL queries. For large businesses, corporates and individuals with large domain name portfolio)

This guide primarily concentrates on Domain Punch Professional.

---

## What can you do with Domain Punch Professional?

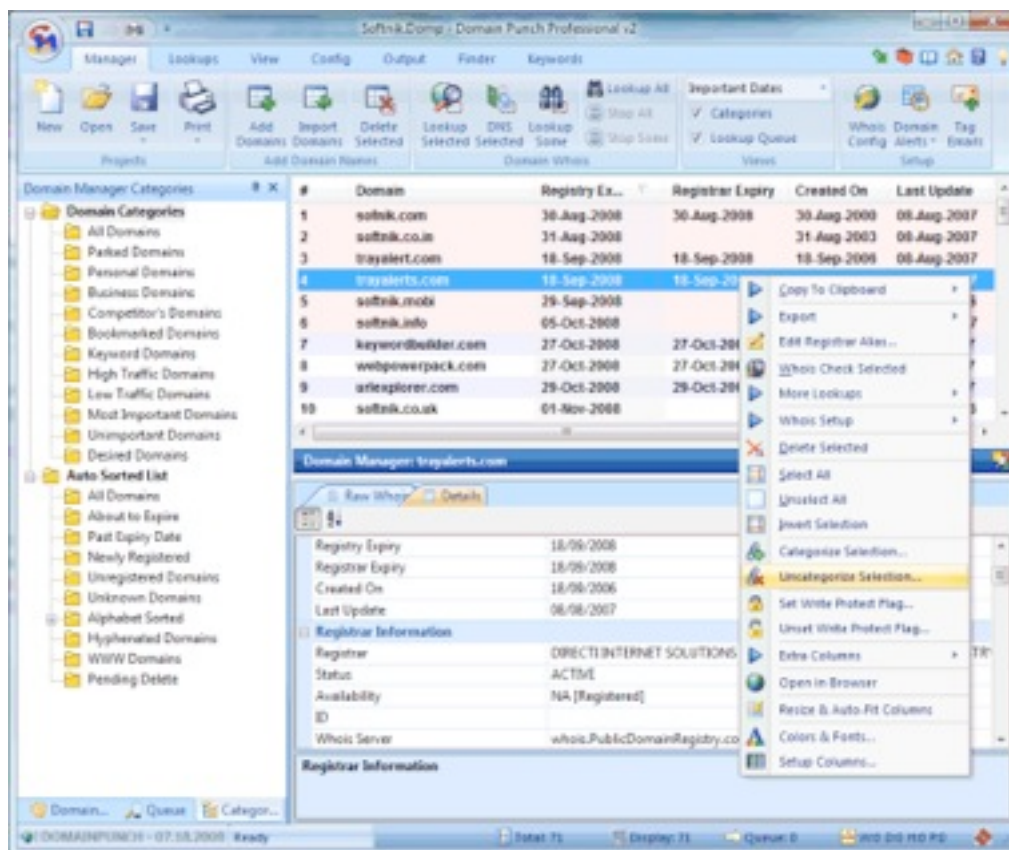
---

1. List and categorize all your domain names
2. Automatically lookup and retrieve domain name records wherever possible.
3. Allow quick access to domain name records and other information like
  - A. Owner Information
  - B. Domain Contacts
  - C. Domain Creation, Last Update and Expiry Dates
  - D. IP Address of corresponding website
  - E. URL the domain points to (or redirects to)
  - F. Registrar information
  - G. Name server information
  - H. MX records associated with the domain

- I. Server Ping Times
  - J. Search Engine Indexing Related (Web Visibility) Information
  - K. Other Custom Information
4. Create alerts on specified events, for example, approaching domain expiry, changes to domain records or corresponding website.
  5. Attach custom notes to domain names.

## The basic screen layout

The software screen layout consists of three panels. The top panel holds the domain names and various extracted information in a neat table. The lower panel has a set of



two views within a tabbed interface. One holds the actual raw whois data for the domain that is selected in the top panel, the other one is the **detail view** that displays all the data for the domain. You can manually edit the data within the **detail view**.

A left vertical panel displays various domain categories, a domain scratch pad and the lookup queue. Please note that the available features will vary from product to product. For example, there is no domain category tree in Watch My Domains Professional. The panel sizes may be adjusted by using the mouse.

By default the domain category bar includes a number of pre-created domain groups. These groups are displayed in a tree format in the domain category bar.

## Adding Domain Names

### Adding or Importing Domain Names Manually

You can add names into Domain Punch Pro using the ribbon bar buttons for the purpose. You can manually type in the names or import names from a text file / older version DMS file.

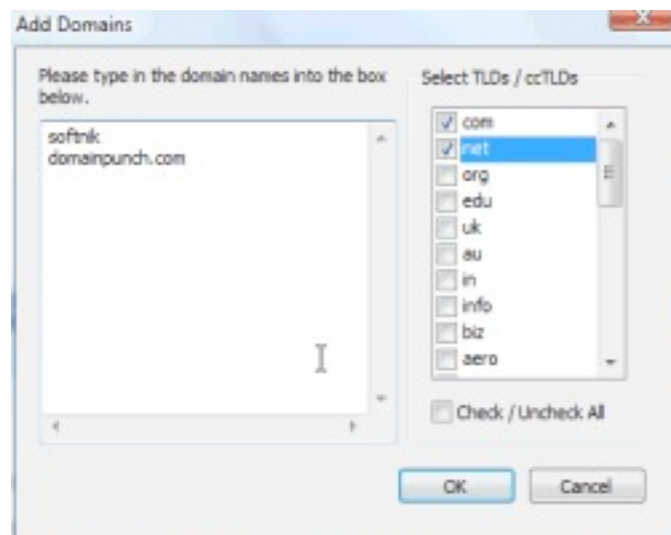
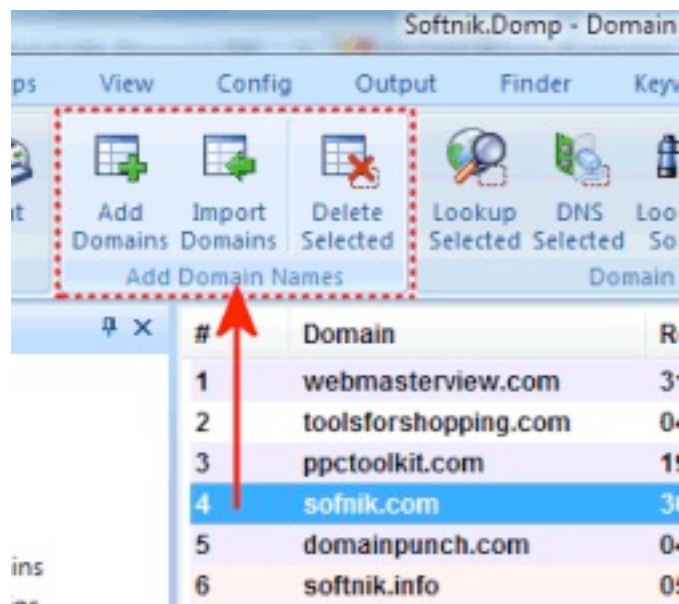
While manually typing in the domain names, if you don't specify a domain extension (like com, net, etc.) the software will add extensions automatically based on your top level domain list selection. You can edit the TLD list using the “Whois Config” option.

### Enter only valid domain names

When entering domain names, make sure that you type in only valid top level domains. One common mistake is entering URLs or typing in host names like [www.softnik.com](http://www.softnik.com). The whois lookup will return a "not found" message if you add invalid domain names.

Here are some examples of valid domain names.

1. softnik.net
2. softnik.com
3. software.biz
4. cats.info
5. cats.co.uk

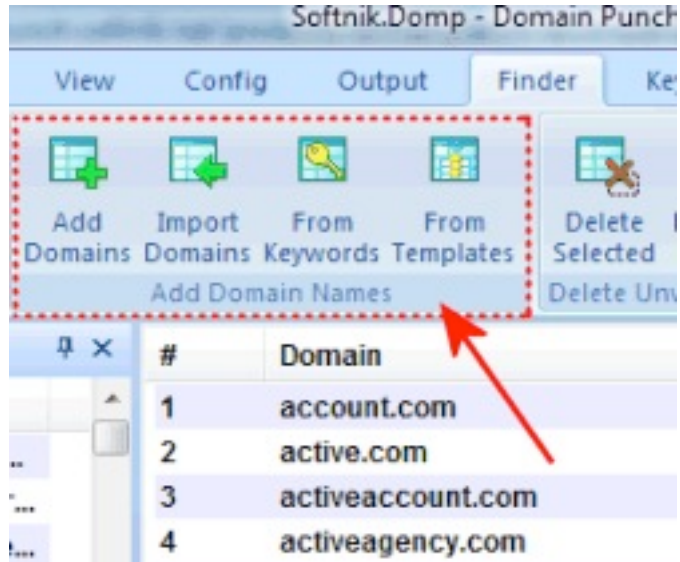


The following are not valid entries

1. www.softnik.com
2. www.business.info
3. blog.domain.de

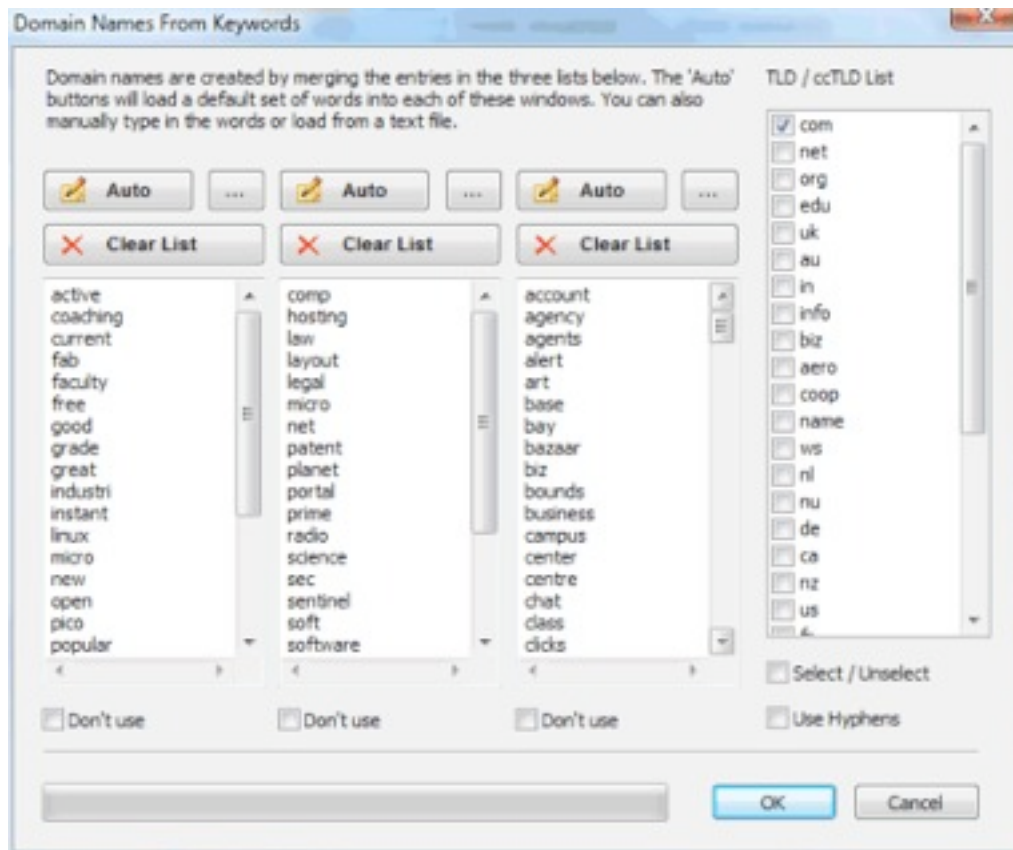
### Importing domain names from a text file or from the older DMS (v1) files.

The **Import** button allows you to import domain names from a text file or from DMS files used by the previous version of Domain Punch Pro.



### Creating Domain Names in Domain Finder

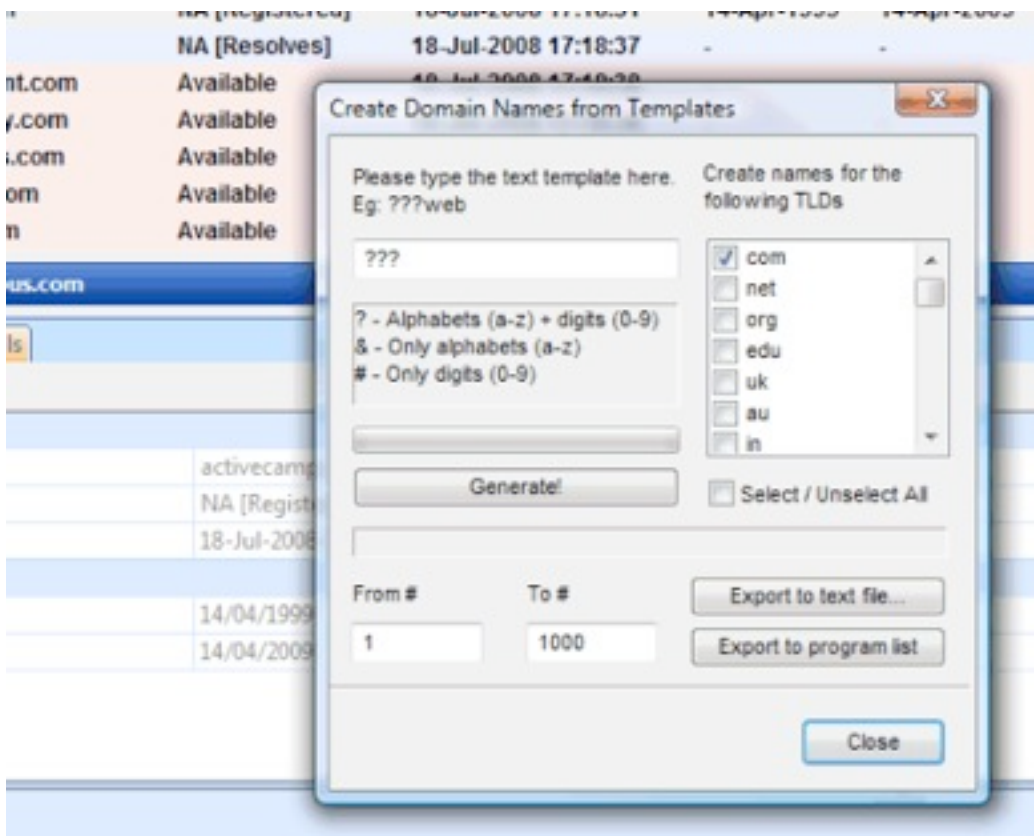
Domain finder contains additional options for constructing domain names from keywords and character templates.



## Domain Names From Keywords

You can create domain names by merging two or more keywords. For example you can create domain names like **computerworld.com**, **softwarebiz.com** by merging words (computer & world, software & biz, etc). You can do this very easily using the "Finder > Add Domain Names > From Keywords" ribbon option. The keyword based domain builder supports up to 3 keywords that may be merged. You can type in the keywords into the three boxes. The software comes with a built in list of keywords (accessible using the **Auto** button).

## Creating Domain Names from Templates

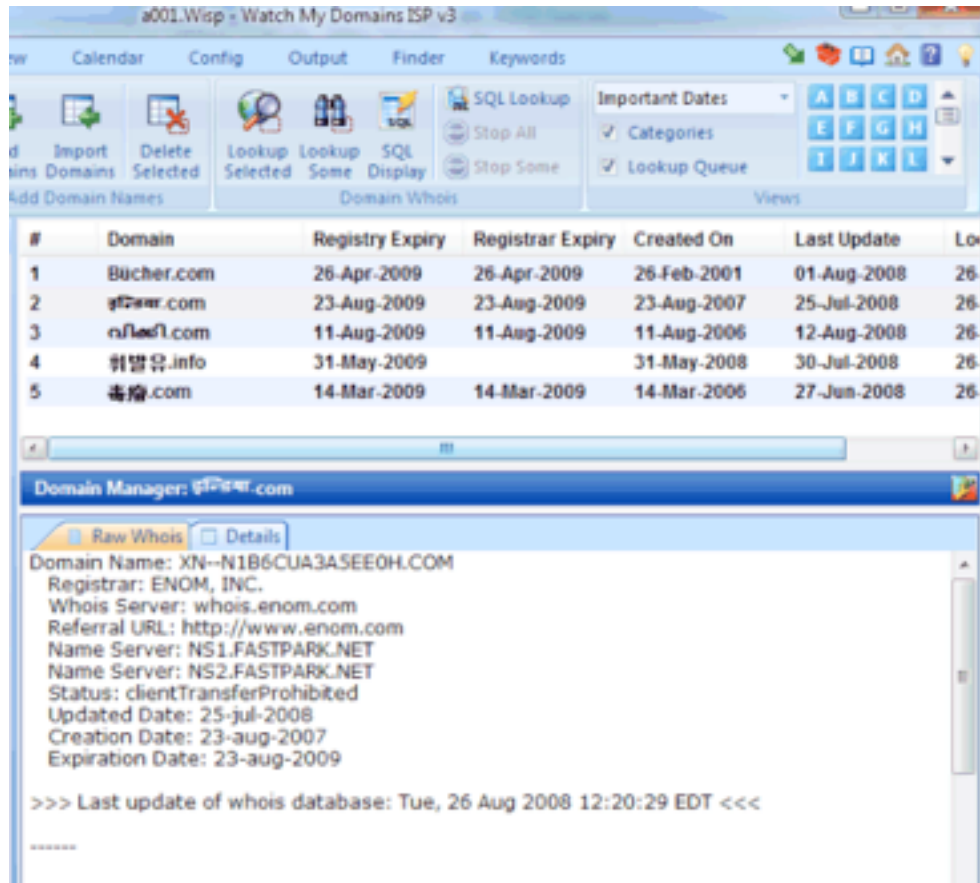


This option ("Finder > Add Domain Names > From Templates" ribbon option) allows you to create domain names from alphabets and digits. For example if you wish to generate a list of all possible 3 character domain names made up of a-z, you just need to type in &&& and click Generate.

## Internationalized Domain Names (IDN)

Domain Punch Professional supports IDN. This means that you can manage domains that contain non-english (non-ascii) characters (see the screen shot below).

To manage Internationalized Domain Names (IDN) you should first enable IDN support from the application settings dialog ("Config > App Settings"). If IDN support is enabled, the software will allow you to add non-ascii domain names.

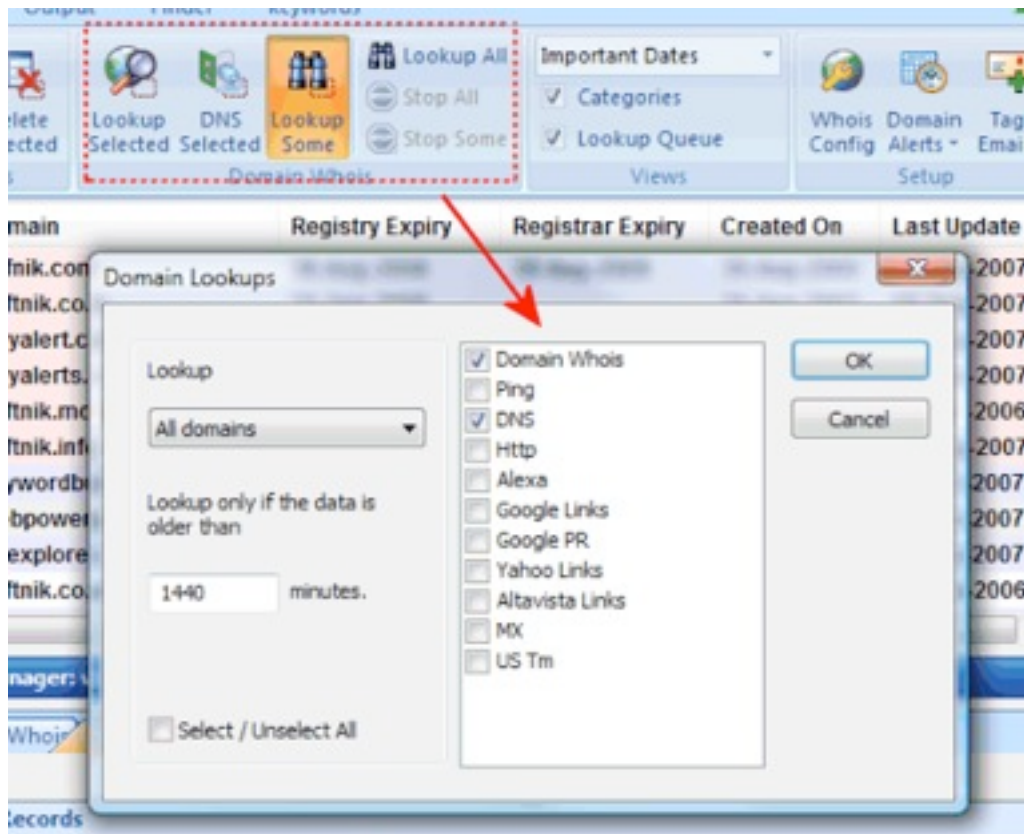


When you do a whois or DNS lookup the software will automatically convert these into their Punycode format and then do the lookup.

Please note that other lookups like **web visibility**, trademark check etc. may not function properly for domain names in non English languages.

## Looking up Domains

Domain Punch Pro supports the normal port 43 whois lookups and DNS lookups (to find



the IP address the domain points to). You can use one of the ribbon bar buttons within the **Domain Whois** group to start the lookups.

There are options to update only the domains that haven't been updated within a set time limit.

To quickly check the domain records of a small set of domains, simply highlight them, right click and select the menu item labeled **"Whois Check Selected"**.

### Adjusting lookup speeds

The **"Whois Config"** button on the ribbon bar allows you to specify the minimum interval between two connections and the number of allowed simultaneous connections to a whois server. By default, for most whois servers the setting is 1 simultaneous connection. Adjusting these values will make the lookups faster or slower.

Please be aware that high speed lookups are not a good idea. Please see the knowledge base article on whois lookup problems for details on this.

To prevent getting black listed by various registrars we have set very conservative lookups speeds by default.

## **Simultaneous Connections**

This specifies the total number of simultaneous connections that will be made to the whois server by the software. Set it to an optimum number based on your bandwidth, CPU resources and the connection count allowed by the registrar. Please note that some whois servers will block access if you make too many simultaneous connections.

## **Connection Interval**

The software employs an interval timer to initiate new connections. You can adjust the timer interval using this parameter.

If you find too many connection errors, come back to the connection settings box and adjust these settings.

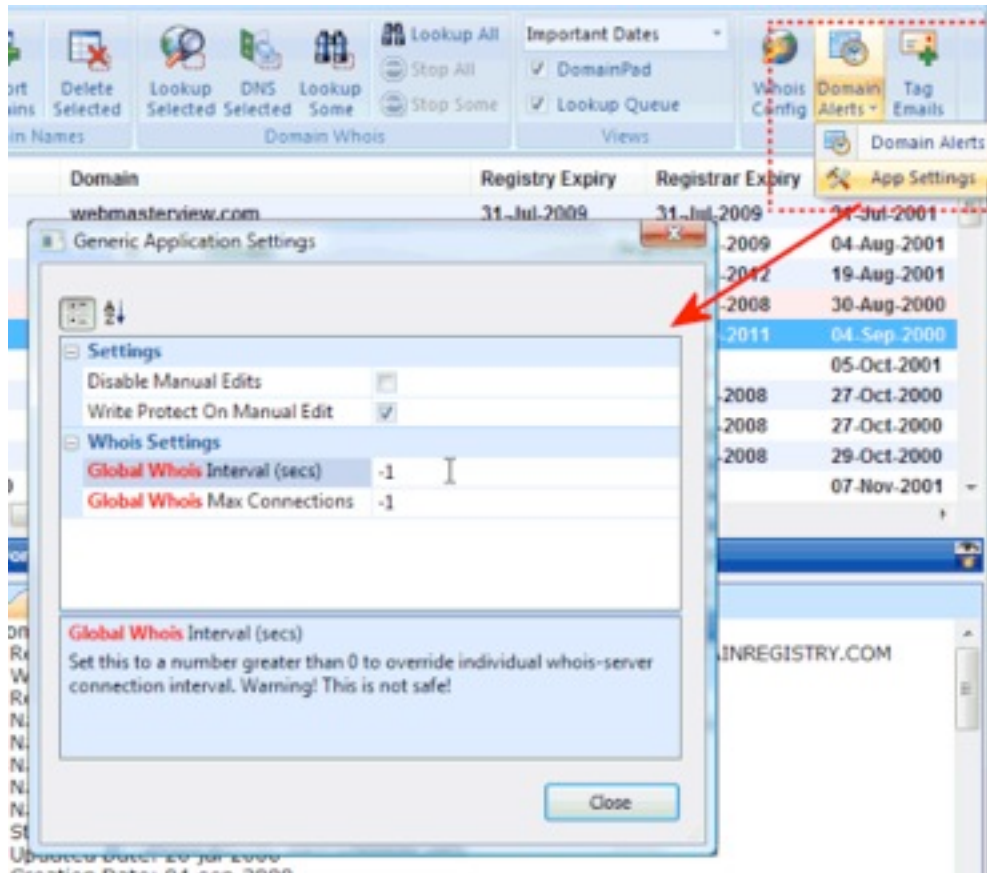
## **Query Limit at Various whois servers**

Most registrars have made changes to their whois servers to prevent very high speed whois access. It is very important that you set the connection interval to higher value (15 seconds and above). Also make sure that the number of simultaneous connections is set to 1 or 2.

If you continuously make a large number of requests, registrars may ban your IP address.

## Over-riding the whois connection settings

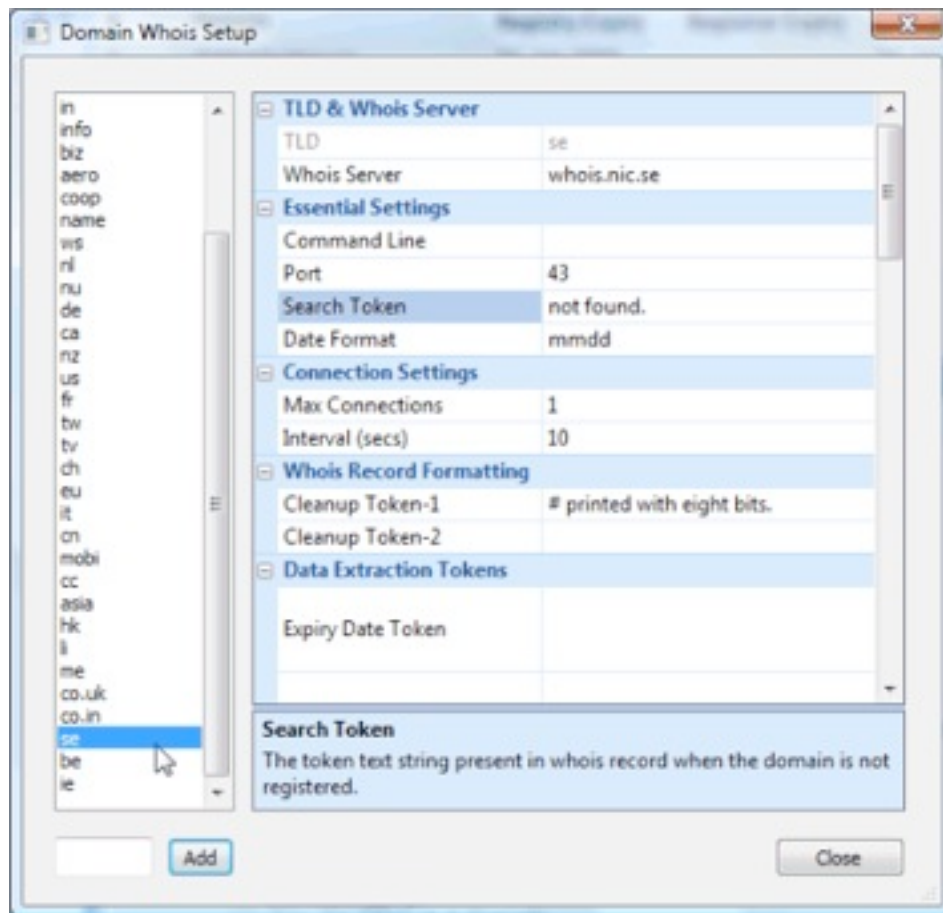
It is possible to globally over-ride connection interval and connection count settings for all whois servers. This allows you to speed up the whois lookups whenever you want to do a small set of lookups. The over-ride is applicable to the current software session. Please note that you should do this only if you know what you are doing.



## Configuring Whois Servers

Domain Punch Professional supports a large number of top level and country code domains. It also supports any domain extension that allows lookup through a port 43 whois server. So if your country code is not supported, you can easily add support for it.

Most of the whois server options for a specific domain can be accessed by right clicking on a domain in your domain list and selecting the options under the **Whois Setup**



popup menu.

See screen shot above.

### Number of simultaneous "Max Connections"

This specifies the total number of connections that are made from your system to whois servers. Some whois servers impose a limit on number of simultaneous connections that are allowed. If you find that connections are being refused, decrease this number to a lower value.

## Connection Interval

Specifies the gap between two sets of connections. Increase this if you get too many errors.

**Tip:** When you have a large number of domains in the database the software may become slow and sluggish whenever multiple lookups are in progress. Increase the connection interval to a large number if this happens.

It is possible to temporarily override the whois connection settings. Please refer to the end of previous section for details.

## Adding Support for new Country Code Domains

To configure support for any top level or country code domain you will need to know

- The port 43 whois server for the domain
- A unique string in the whois output that indicates the availability or non availability of a domain for registration
- Any additional query options (specified by the whois server operator)

To configure various top level and country codes you should use the

Domain Manager > Setup > Whois Config

ribbon bar option. This will list all the currently configured top level and country code extensions.

To add a new domain extension, simply type in the extension into the box (at the lower part of the window) and click the **Add** button. Then select the new extension in the list and click the **Settings...** button.

## Essential Whois Server Setup

The "essential settings" allows you to configure the basic whois server information.

Normally the query prefix box should be left blank. However for Com and Net domains the proper query prefix is "**domain**" and is required.

The query prefix is useful for whois servers that require special options. For example, to manage German domain names with umlauts, the following query prefix is required.

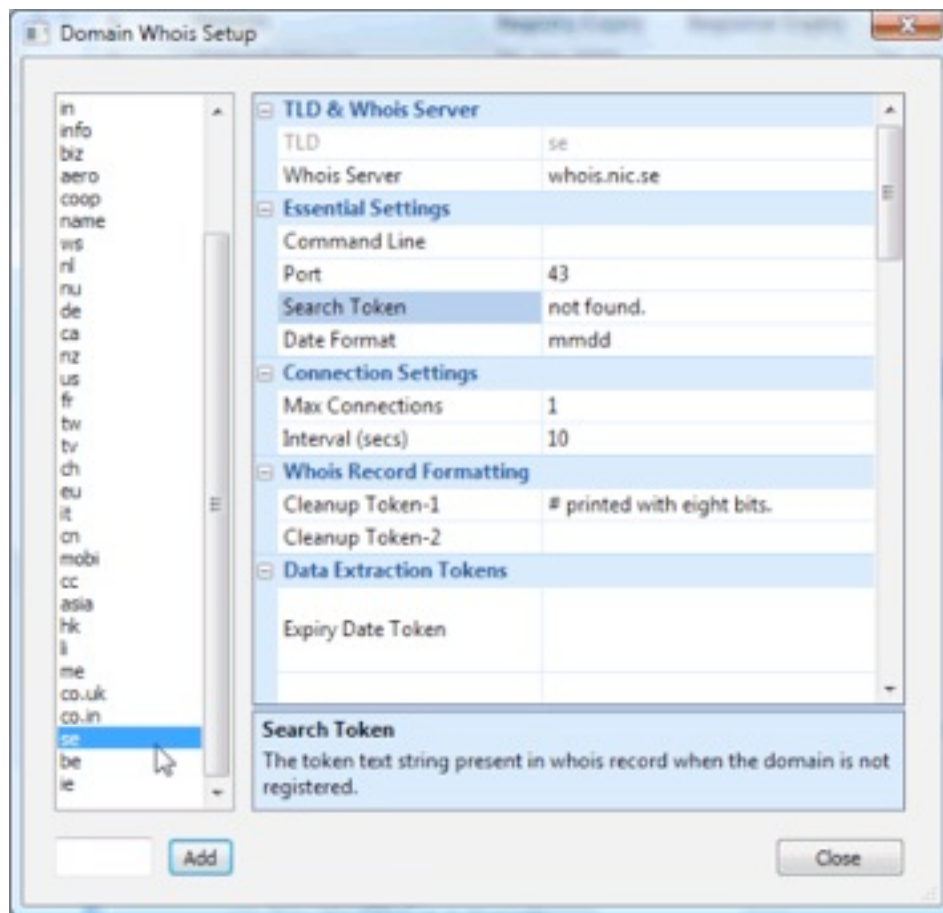
```
-T dn -C ISO-8859-1
```

Please visit the registrar web sites for details on similar options supported by different whois servers.

You can also **change the port** used for doing whois lookups (from the default port 43). Use this only if you have special access to whois servers on a different port (eg: Nominet DAC).

## Domain Availability String Token

The search token is a unique string in the whois output that indicates the availability of a domain for registration. This will be a string like “Not found”, “No Match”, etc. However there are cases where the whois output indicates the reverse. For example, a whois output may show “**Not available**” when a domain is already registered. In such cases you can put a ~ before the string to indicate that the domain is available when the string



is **not** present.

## Resetting changes made to whois configuration

If you make changes and the software stops working properly you can reset the changes for a specific domain extension by removing all entries for that TLD. You may also contact us for support. Please see the last section of this user guide for contact information.

## Advanced Whois Server Configuration

You can use the **Whois Server Settings** button to access the advanced configuration dialog. This allows you to specify the connection interval, number of simultaneous connections, etc. for a whois server. Please see “whois usage restrictions” to see why this is important.

To **increase the speed of lookups** you should increase the number of allowed simultaneous connections and decrease the connection interval.

For TLDs and ccTLDs that have multiple registrars (eg: COM, NET domains) the connection intervals and connection count **need to be set separately for each whois server**. The easiest way to do this is by right clicking a domain and selecting the **"Whois Setup > Advanced Whois Settings..."** menu. This is required because you will not be able to access the settings for all the whois servers from the original **"Whois Config"** option.

Most whois output have standard header and footer messages that may be removed for a better on screen display. You can specify string tokens for cleaning the whois output.

## Advanced String Tokens For Data Extraction

There are times when simple string token settings will not work. Here are a couple of advanced string extraction token examples.

[Zone-C]@@Name:

German domain records have multiple blocks of data each with same text tokens. The above will allow you to extract the “Registrar Name” (look for the token “Name:” that follows “[Zone-C]” in the whois records).

Registrant:@@#L#2

Some whois records may always contain the required data at a specific line number. Use the above to pick the text at line 2 after the occurrence of the token “Registrant:” (please note that blank lines are ignored).

---

## Web Based (http, port 80) Whois

---

It is possible to make Domain Punch professional retrieve whois records from a web based (http) script.

Assume that your whois lookup page is at

<http://www.yourdomain.com/whois?domain=example.com>

You should enter the following in the whois setup dialog.

Whois Server: [www.yourdomain.com](http://www.yourdomain.com)

Port: 80

Comand Line: GET /whois?domain={D}

Please fill in the other settings like date format, search token, etc. based on the actual whois record data as returned by your script.

This will not work if the web based script uses authentication or a CAPTCHA input.

### Why would you need http based whois?

If you have a special agreement with any registrar for access to their whois API, you can create your own (PHP/Python/any other) whois script and upload it to your server. Then use that script instead of accessing the port 43 whois server.

---

## Whois Usage Restrictions

---

Software like **Watch My Domains** (Pro and ISP) and **Domain Punch Professional** retrieves domain records by connecting to various whois servers. These whois servers are operated by the registry and/or various domain registrars.

Because of the large number of Whois lookups that are being done, most registrars have set limits on how the whois servers could be accessed. It is very important that these terms and conditions are understood and followed whenever you use a software that performs whois lookups.

Unfortunately there is no uniform set of rules followed by each registrar. Each and every registrar has their own set of rules (and some times these are not even mentioned anywhere)

### Problems with too many unrestricted lookups

If you do too many whois lookups you will soon start seeing outputs similar to the following

Welcome to the NSI Registrar Whois Server.

Your IP address is contained within a list of IP addresses that may have failed to abide by Network Solutions' Whois policy.

If you feel this is in error, please contact us at ....

Here are some examples of the limits set by different domain registrars. Please note that these are just a few examples. Almost all registrars have similar limits in place.

**Tucows** (whois.opensrs.net) rejects multiple simultaneous connections from the same IP. You will have to be satisfied with one connection at a time.

**BulkRegister** (whois.bulkregister.net) will immediately block the IP temporarily if they notice a large number of connections being made. This is done by their software automatically.

**Network Solutions** (whois.networksolutions.com) will block the IP temporarily if you do more than 1000 lookups in a day.

**Go Daddy** (whois.godaddy.com) will simply start hiding all the relevant information from the returned whois text if your IP gets in their list.

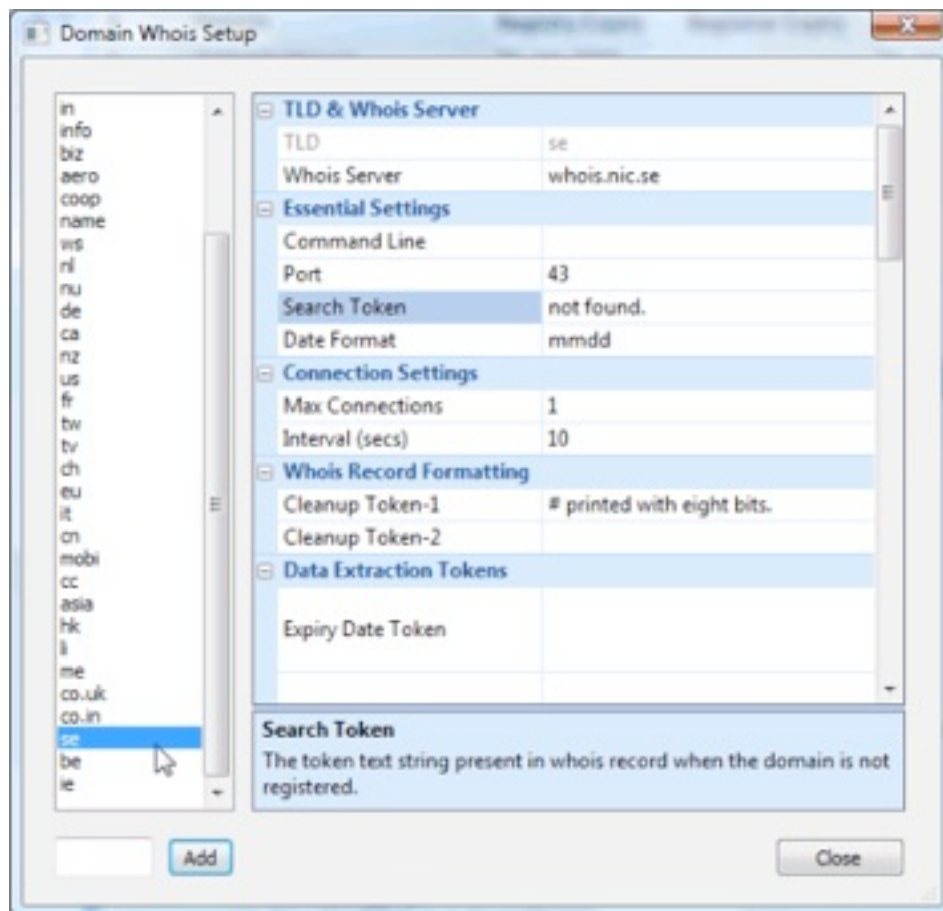
**Nominet** (UK domains) has a published whois usage policy available at their site.

...most other registrars also have similar restrictions.

## Doing Whois Lookups, the right way

All our domain name management software products allow you to configure the number of simultaneous connections and a connection interval. This will ensure that you don't abuse the whois servers and get banned. The ideal setting in software like Watch My Domains is 1 connection and a lookup interval of 12 seconds or more (5 connections per minute).

If you find your IP address being banned permanently, the only solution is to contact the registrar and discuss the problem with them.



If your internet connection has a permanent IP, you should be very careful while using any software that connects to whois servers. Make sure that your IP doesn't find its way into the registrar ban lists because of excessive usage. If you ever find your IP banned give them a call and explain your situation. Find out what got you banned and assure them that you will follow their whois policy usage guidelines.

---

## Domain Whois Lookups Not Working?

---

Do you have problems when looking up domains that are **registered through certain registrars**? This could happen because of the following reasons.

All domain name lookup software including **Domain Name Analyzer**, **Domain Punch Pro**, **Watch My Domains (Pro & ISP)**, etc. require access to **port 43**. You will need to enable access to this port if you are behind a firewall or proxy. So ensure that the whois lookup problem is not because of a blocked **port 43** before reading further.

Most of our software is **highly configurable**. For example, it is possible to change the port used for lookups to another port (instead of 43). So be aware of any changes you have made to the software configuration.

### **The registrar's whois server is temporarily down.**

**Solution:** Please wait a while and try again. Check your registrar's website to see if there is a prior announcement of a down-time.

### **There is a network problem at your ISP or some where else.**

**Solution:** You should wait a while before retrying, contact your ISP or your network administrator.

### **The whois connection to the server is timing out**

**Solution:** Increase the time out interval for whois connections. By default this is 18 seconds. You might want to increase it to say 30 or in some cases 90 seconds. Use the **Edit > DNS & Whois Lookup Settings** menu option to do this.

### **The registrar's whois server is blocking connections from your computer.**

**Solution:** Please see the section on whois usage restrictions. If your IP is being blocked you should stop all lookups immediately. Most registrars reset their ban list every 24 hours. So if you keep redoing the lookups your IP may be banned for longer duration.

You can also use the diagnostic whois tool to check if the port 43 connections from your IP address are being blocked.

### **The registrar's whois server is blocking connections from your ISP.**

**Solution:** This is a common issue with UK domain lookups and is more troublesome because both the ISP and the registrar will deny there is a problem. In some cases you might just have to use another ISP.

### **You have a firewall / proxy server setting that is preventing connections to the registrar's whois server.**

**Solution:** Make sure that you have enabled connections through port 43 and that you are not blocking connections to certain addresses. Contact your network administrator in case you don't control the firewall or proxy.

### **You have a software configuration / setup error**

**Solution:** Make sure that you have specified the proper whois servers, connection settings etc. within the software. Mostly this is done from the **Edit > Top Level Domain List** menu option.

Please double or triple check the entries. Spelling errors in the whois server name are difficult to notice at times.

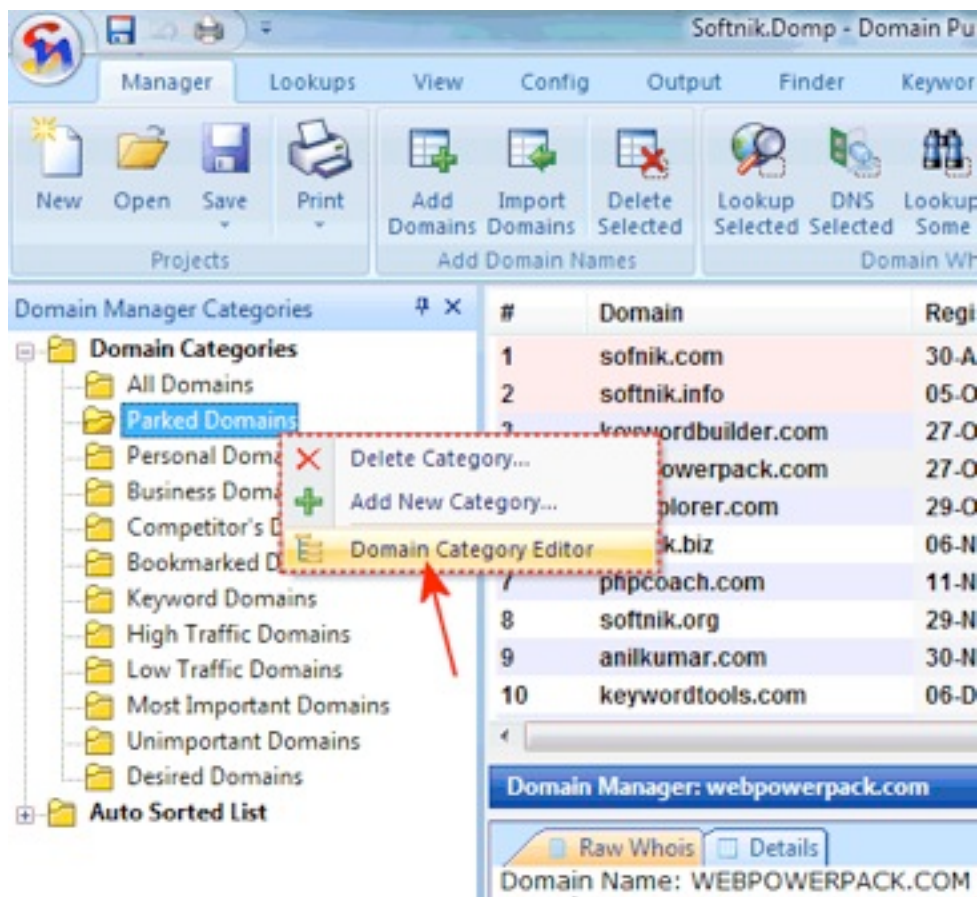
You can **reset the whois setup** for any TLD/ccTLD by right clicking on a domain name in the list and selecting **Data Extraction Setup > Reset To Default** menu option.

## Domain Categories

Domain Punch Professional allows you to categorize domains into various groups or categories. By default it also includes a number of pre-created domain groups. These groups are displayed in a tree format in the **domain category pane**.

You can use the *Manager > Views > Categories* ribbon option to toggle the domain category tree on or off.

To add additional groups to the *Manually Grouped List* within the domain tree simply right click on the tree and use the *Add New Category* menu option. See the screen shot below.



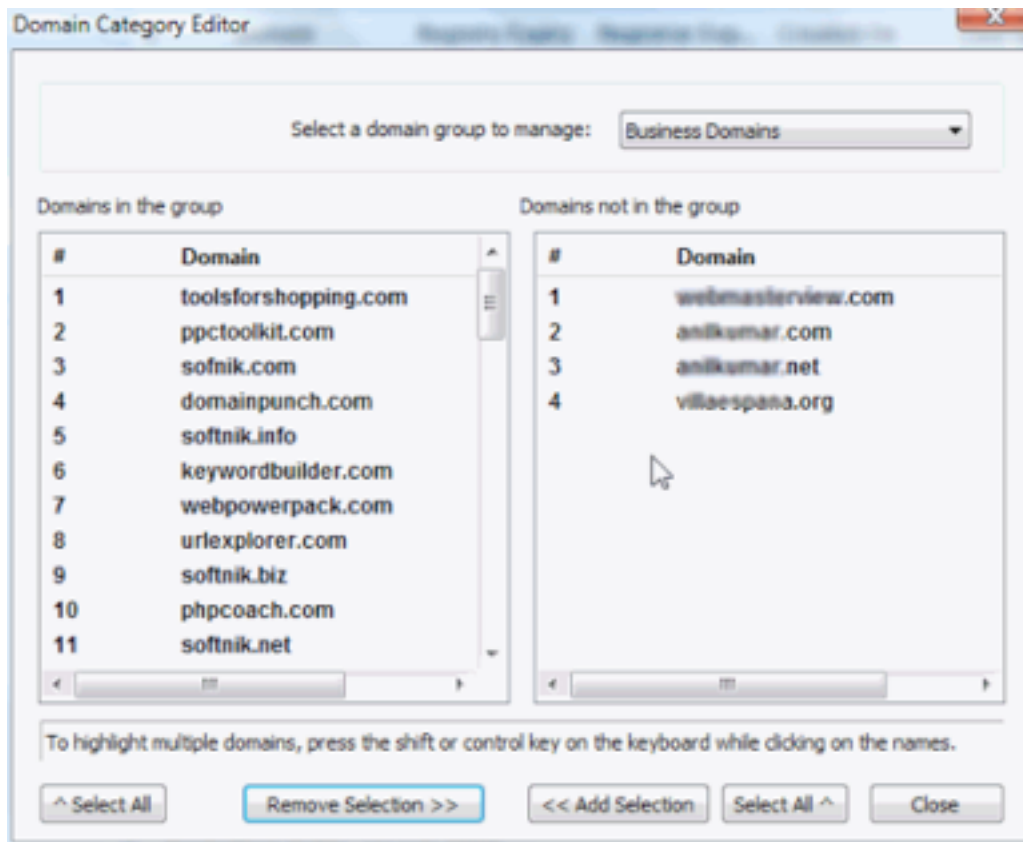
To add domains to a group you should right click on a domain name in the main list and select *Categorize Selection*. Highlight multiple domains (using the ctrl or shift key along with mouse click) and then use the *Categorize Selection* option to group multiple domains.

## Renaming Domain Category Names

Domain categories can be renamed by clicking on the name of the category twice (once to select the category and then a second time to start the in-place editing. Don't double click!)

## Domain Category Editor

An easier way to manage the domain categories is through the **domain category editor**. Access this by right clicking within the domain category tree.



You can easily move domains in and out of various categories from within the editor.

---

## Domain Alerts, Web-scripts and more...

---

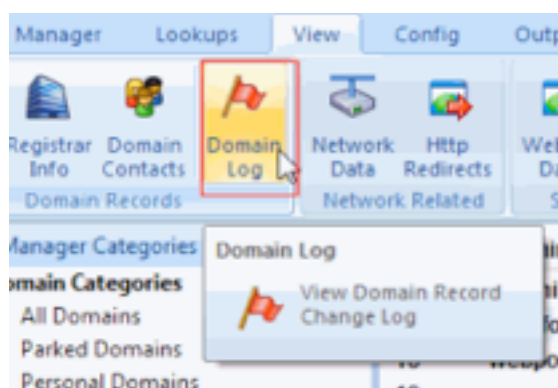
### Domain Alerts

The **Domain Alerts** option allows you to setup various alerts and automated options within the software. These include...

1. **Expiry date highlight** - Sets the number of days (ahead of expiry date) to turn the on-screen display highlight on.
2. **Email Alert** - Sends an email to the specified address when a domain name record is changed. You will need to specify the SMTP server and the email addresses. Simple SMTP authentication is also supported. However, some SMTP servers may fail to work due to various spam protection protocols. In such cases please use the **Web Script** method. You may also try using one of the MX servers of the email domain as the SMTP server. The MX server will normally accept emails meant for domains it manages.
3. **Web Script** - Software can be made to execute a specified web based script when a domain record is altered. The information about the changes is passed as a POST variable to the script. You need to name the POST variable (see screen shot below). Use this method if you are unable to use the Email (some ISPs may not allow Emails).
4. **Auto Lookups** - Turn automatic lookups on/off and specify the lookup intervals.

### Domain Record Change Logs

The **data record** change log is automatically generated and appended to the log whenever you do a lookup. You can access the log file from the “**View Tab > Domain Log**” ribbon button.



## Sample PHP Web Script

Here is a sample PHP script you can use to send domain name alerts. Please replace the names and email addresses appropriately and then upload the script to your server. Then type in the URL of the script in the above settings dialog.

The script uses 'alerts' as the POST variable name. You can change it and specify the same variable name in the software settings box.

```
<?php
if( isset($_POST['alerts']))
{
    $notes      = $_POST["alerts"];
    $notes      = stripslashes($notes);
    $notes      = strip_tags($notes);
    $subject    = "Domain Name Alert";
    $fromname   = "Your From Name";
    $fromemail  = "from@example.com";
    $toname     = "Your To Name";
    $toemail    = "to@example.com";

    $to        = $toname.' <'.$toemail.'>';
    $from      = 'From: ' . $fromname . ' <' . $fromemail;
    $from      .= ">\r\nReturn-Path:" . $fromemail;

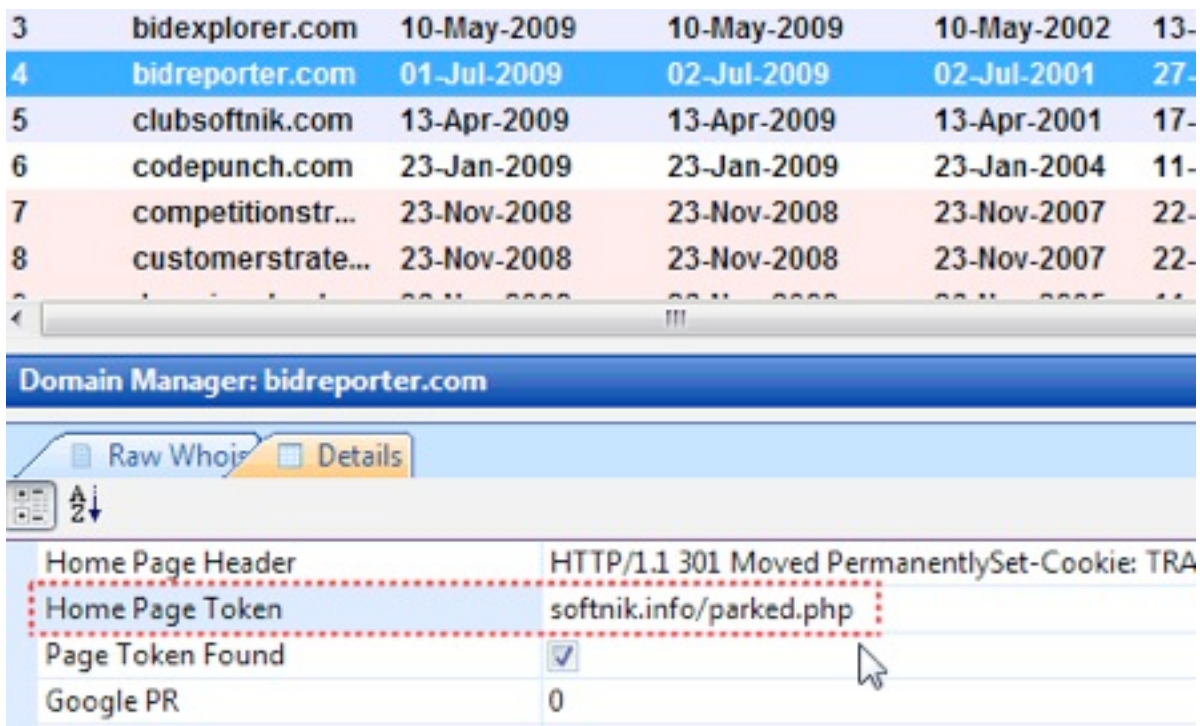
    mail($to, $subject, $notes, $from);
    echo "Done";
}
else
{
    echo "Error";
}
?>
```

## Simple Website Monitoring - Automatically Monitor Domain Home Pages and Check For Specified Text Tokens

Domain Punch Professional will allow you to do simple website monitoring. You can specify **text tokens** to look for in the home pages of each of your domains. If the specified text token is not found, it will be indicated in the domain display list. The software can also trigger an alert and execute a pre-assigned webpage script if the text token is not found.

Use this to **automatically monitor** if all your domain names are pointing to the proper web pages.

### Specify The "String To Search For" For Each Domain



The string to look for in the web pages are specified in a column / field called **Home Page Token**. You can edit the **Home Page Tokens** using the **detail tab** (see the screenshot below). You can also "bulk add" or import the search texts (see below for instructions).

### The "Page Token Found" Column

This value will be unset (value=0) if the string specified in "Home Page Token" is not found in the domain home page HTML. By default this value is always set.

## Enable the display of "Page Token Found" Column

You can enable the display of **Page Token Found** column by right clicking within the domain list and enabling it from the **Setup Columns** options.

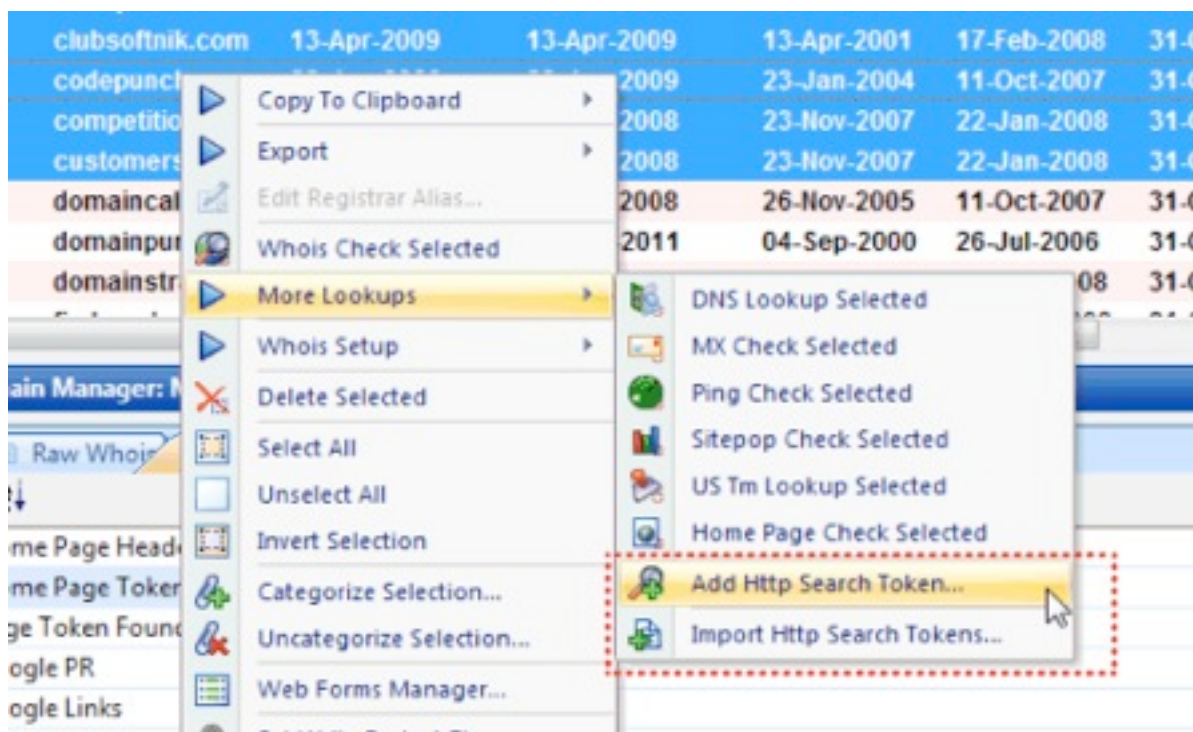
## Redirected Domains

If you are redirecting the domain home page, you can specify a string from the redirect URL as the token. Please see the screen shot above. Since the domain is being redirected to **softnik.info/parked.php**, the home page token is set to "softnik.info/parked.php"

Please note that the software will not be able to find the **search text** if it is in the final redirected web page.

## Domain Alert if the Search Token is Not Found

If you have enabled domain alerts for HTTP lookups, an alert will be generated whenever the domain home page doesn't contain the specified search token. You can then optionally execute a web page script.



## Adding HTTP Search Tokens in Bulk

You can select multiple domains (using Shift / Ctrl Key and mouse click) and then specify the same **Home Page Tokens** for all the selected domains by right clicking within the list and selecting "**More Lookups > Add Http Search Tokens**"

## Importing HTTP Search String Tokens From a CSV File

You can import the **Home Page Tokens** from a CSV (Comma Separated Value) file by right clicking within the list and selecting "**More Lookups > Import Http Search Token**"

The first (header) row in the CSV file should be the following...

```
Domain,Home Page Token
```

Each row after the header should be the domain name followed by a comma and then the search text. You can wrap the search text string within quotes if it also contains a comma.

Here is a sample CSV file.

```
Domain,Home Page Token
```

```
domainpunch.com,"Domain Portfolio Management"
```

```
softnik.co.uk,"softnik.info/parked.php"
```

## Web Page Redirect Monitoring

The home page lookup (**http**) options provide a powerful method to monitor where your websites point to. Use it to find

- The **HTTP status code** returned by the domain's home page on the web
- The **redirect URL** (if the home page redirects to another location)
- The title of the web page (**<title>** tag contents)
- IP address (A record)

#	Domain	IP	Home Page Status	Redirect URL	Home Page Title
2	opendds.com	208.87.217.132	HTTP/1.0 302 Found	http://guide.opendds.com/?url...	
3	videomms.org	204.9.177.195	HTTP/1.0 401 Unauthorized		
4	goodkeywords.com	72.14.181.7	HTTP/1.1 200 OK		Good Keywords - Find the...
5	domainname.com	72.14.181.7	HTTP/1.1 200 OK		Domain Name Manage...
6	webmaster-view.com	72.14.182.112	HTTP/1.1 200 OK		Webmaster View - Maste...
7	softnik.com	72.14.181.7	HTTP/1.1 200 OK		SEOLab - Premium Softw...
8	softnik.com	72.14.181.7	HTTP/1.1 200 OK		Softnik Technologies: Str...
9	goodkeywords.com	72.14.181.7	HTTP/1.1 301 Moved Perm...	http://www.goodkeywords.co...	
10	softnik.com	72.14.181.7	HTTP/1.1 301 Moved Perm...	http://www.softnik.infoparke...	

## Domain MX Record / Mail Server Monitoring

You can use Domain Punch Professional to check if all your domains have been properly configured to send / receive emails.

You can display the MX records as host names (MX1, MX2... columns) or IP addresses (MXIP1, MXIP2... columns). Right click within the domain list and select "Setup Columns" to enable the display of required columns.

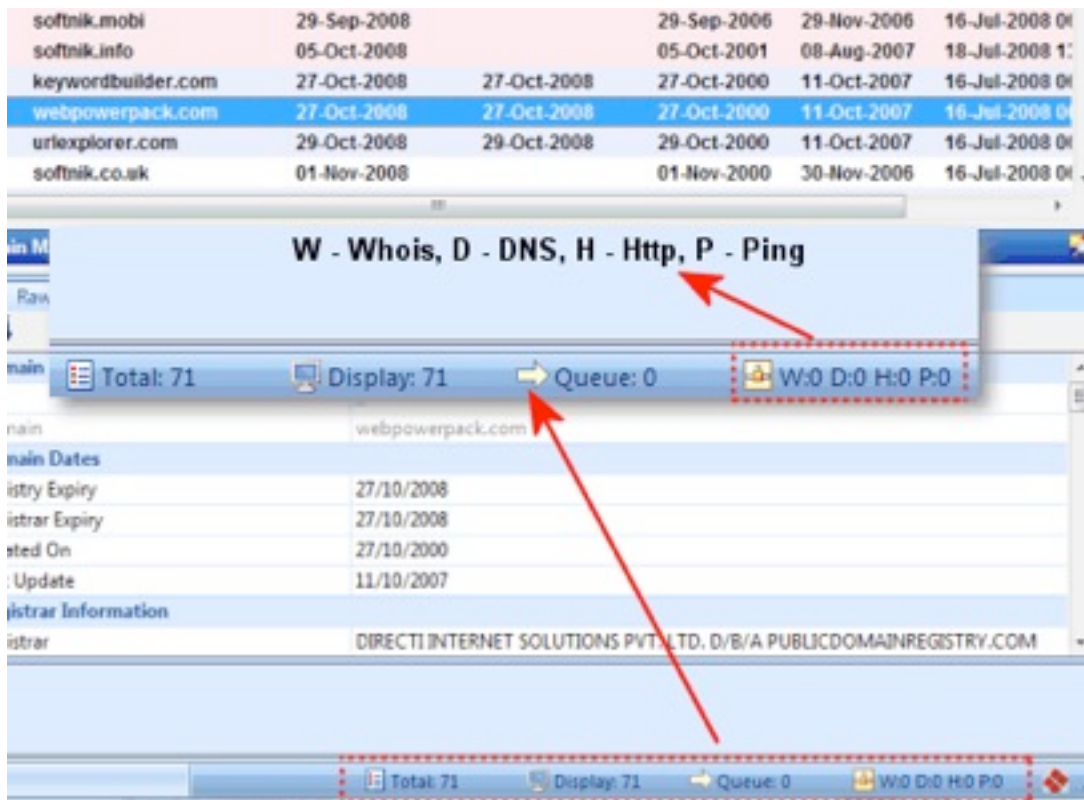
Domain	MX1	MXIP1	MX2	MXIP2	MX Checked At
dnsmadeeasy.com	mx2.dnsmadeeasy.com	205.234.170.136	mx3.dnsmadeeasy.com	67.19.109.170	03-14-2009 00:26:49
softnik.com	mx1.emailsrvr.com	66.216.118.97	mx2.emailsrvr.com	66.216.118.114	03-16-2009 15:06:05
aspmx5.googlemail.com	aspmx5.googlemail.com		aspmx1.google.com		01-10-2009 23:41:57
aspmx3.googlemail.com	ASPMX3.GOOGLEMAIL.com	209.85.199.27	ASPMX4.GOOGLEMAIL.com	66.249.93.27	03-14-2009 00:26:19
aspmx2.googlemail.com	alt2.aspmx1.google.com	209.85.133.114	aspmx2.googlemail.com	209.85.135.27	03-14-2009 00:23:37
softnik.com	-	-			07-20-2009 23:08:16
keywordbuilder.com	-	-			03-14-2009 00:26:30

## Lookup Queue and On-screen Legends

Domain Punch Professional performs different types of lookups for obtaining information. These include whois lookups (normally on port 43), Http lookups (port 80), Ping checks, DNS Lookups, etc. The lookup status is indicated through a cryptic message on the status bar and through a lookup queue list (may be toggled on/off using the *Manager > View > Lookup Queue* ribbon option).

### Lookup Queue

When lookups are in progress, the status bar displays the queue status. For an explanation of the cryptic status bar display, please see the screen shot on the right.



In addition to the status bar display, the *View > Lookup Queue Bar* menu option will allow you to see the domain names that are in queue.

---

## Problems when extracting Expiry Dates

---

Different registrars use different formats for expiry dates, last updated dates, etc. Domain Punch Professional is capable of finding the correct format automatically. However in certain cases the software will not be successful.

For example, if it encounters a date like 08-11-2012, there is no way to know which is the date and which is the month. In such cases Domain Punch will not extract the date. But it is capable of learning the format as it encounters more domain name records from the same registrar. For example, if it notices another domain name record with the date 03-31-2011, it will know that the registrar uses mm-dd-yyyy format. From then on, the software will extract the dates for that registrar without any problems.

### **If the expiry date/creation date is inaccurate or is missing...**

We have tried to make the software support as many whois servers as possible. In some cases we may not have considered a particular whois server or the output format may have changed. Simply contact us with the domain names that do not work. In most cases we will be able to suggest a simple configuration change that will solve the problem. If this is not possible, we will fix it as soon as we can.

In some cases, the expiry date may not be present at all in the port 43 whois data record supplied by the registry / registrar. In such cases there is no other option other than manually entering it using the **details view**.

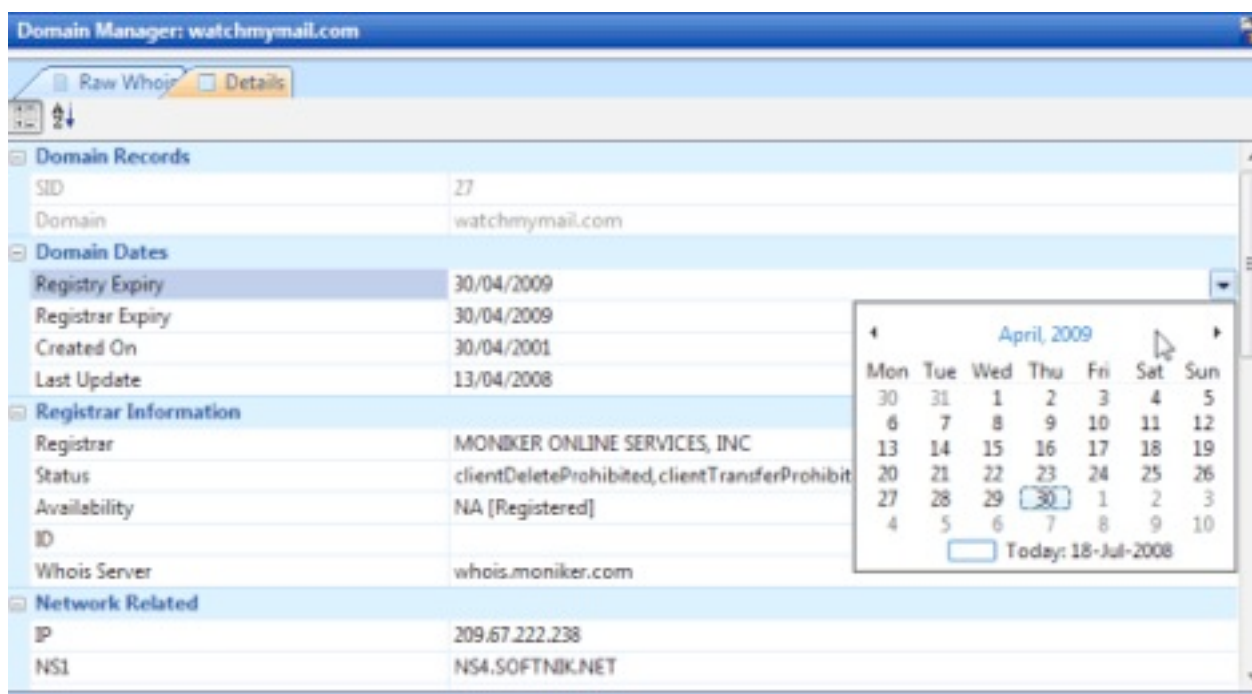
## Manually Entering / Editing Data

There are times when you need to manually enter data into the domain list. For example, some registrars do not provide the expiry dates in their port 43 whois records. In such cases you can manually add the expiry date and then lock the data so that it is not overwritten accidentally.

To manually edit the domain records, use the **Details View**.

### Domain Details (Property) View

The details view (easily accessible in the lower panel of the software window) allows



you to quickly view and edit the data corresponding to domain.

### Write Protecting Manually Edited Domain Data

Whenever you manually edit or enter a data for a domain, the entire recordset for that domain is automatically write protected. This will prevent the manually entered data from being overwritten due to a whois lookup.

### Identifying modified and or write-protected domain records

**Write protected domains** will display a [] around the index number for the domain (the "#" column). A ~ in the "# column" indicates that the domain record was manually altered.

Write protected domains will not be looked up again. So you will need to **unset the write protect status** to re-enable whois lookups for that domain. You can do this by right clicking the domain in the main list and selecting the appropriate option or not enabling the **write-protect** check box in the **details tab**.

---

## Web Forms Manager - Quick Access To Domain Registrar & Hosting Accounts

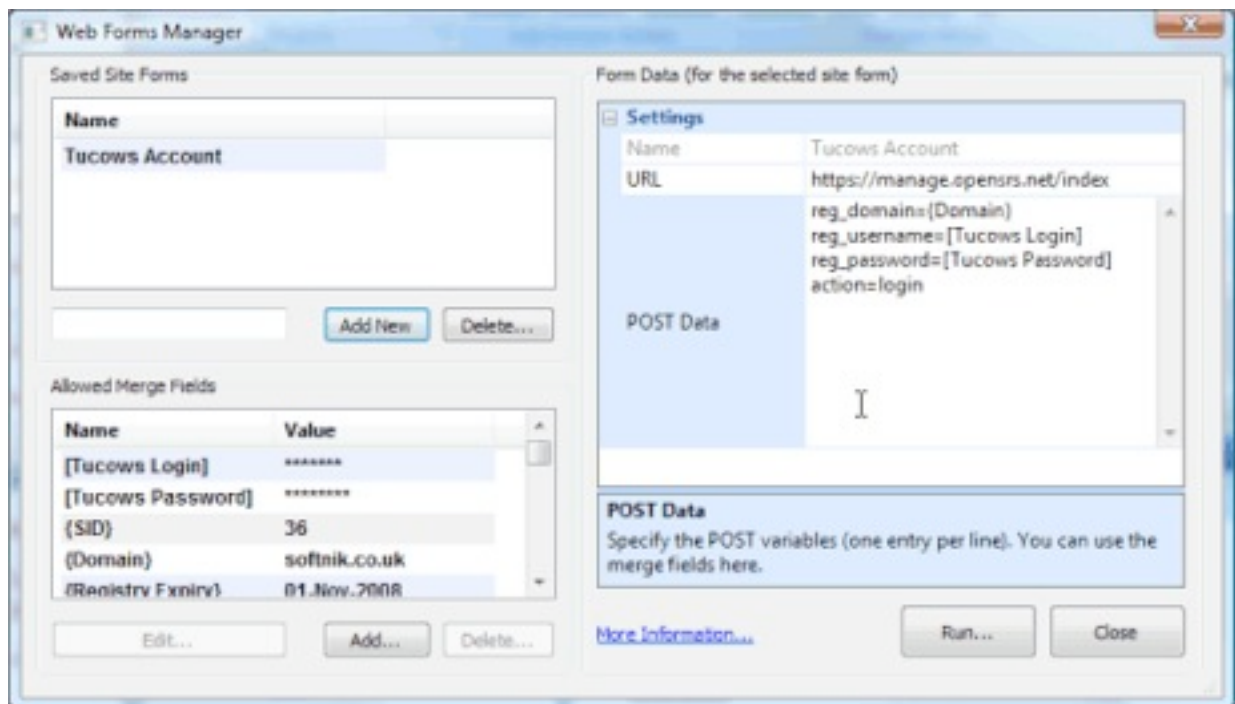
---

### What is Web Forms Manager?

Web Forms Manager is a tool for quickly logging into your registrar management account, web hosting interface or any other on-line resource.

Some setup is required for this.

You need to know the **POST URL** and the POST data variable names. If you have some knowledge of HTML you can quickly inspect the HTML source of the web page in question and create a compatible setting within Domain Punch Pro or Watch My Domains ISP.



### How To Access Web Forms Manager?

To access the Web Forms Manager, right click on any domain and select "Web Forms Manager" from the menu. By highlighting a domain before invoking the **Web Forms Manager**, you will have access to any of the record values for that domain as a parameter in the POST data.

For example, If you highlight **softnik.com** and invoke the Web Forms Manager, you can use {Domain} as an entry in the POST data. The software will automatically replace {Domain} with **softnik.com**. If you use **{Registry Expiry}** as a POST data, it will be replaced with the actual registry expiry date when the web form is invoked.

See the list under the **Allowed Merge Fields** list to see all the allowed merge parameters.

## Adding Your own Merge Fields

You can add custom merge fields to the list. These appear within a pair of [] and can be used within the POST data.

Here is an example setting for Tucows.

URL: `https://manage.opensrs.net/index`

Post Data:

```
reg_domain={domain}
reg_username=[Tucows Login]
reg_password=[Tucows Password]
action=login
```

You need to add two custom merge Fields called **Tucows Login** and **Tucows Password** (and set the values to your actual login name and password) to use the above settings.

## Limitations and a Warning!

The **Web Forms manager** will not work on sites that use extensive Java script or use complicated session management. It will also not work if your registry settings have been changed to prevent access to Internet Explorer through the Windows shell API.

Please **don't setup your actual login names** and passwords in computers that are **not secure**. If you do it anyone can run Domain Punch Pro on that computer to access your domain registrar account!

## Checking the POST Data

You can quickly check if the POST variables are being posted properly by creating a simple PHP script containing the following one line entry.

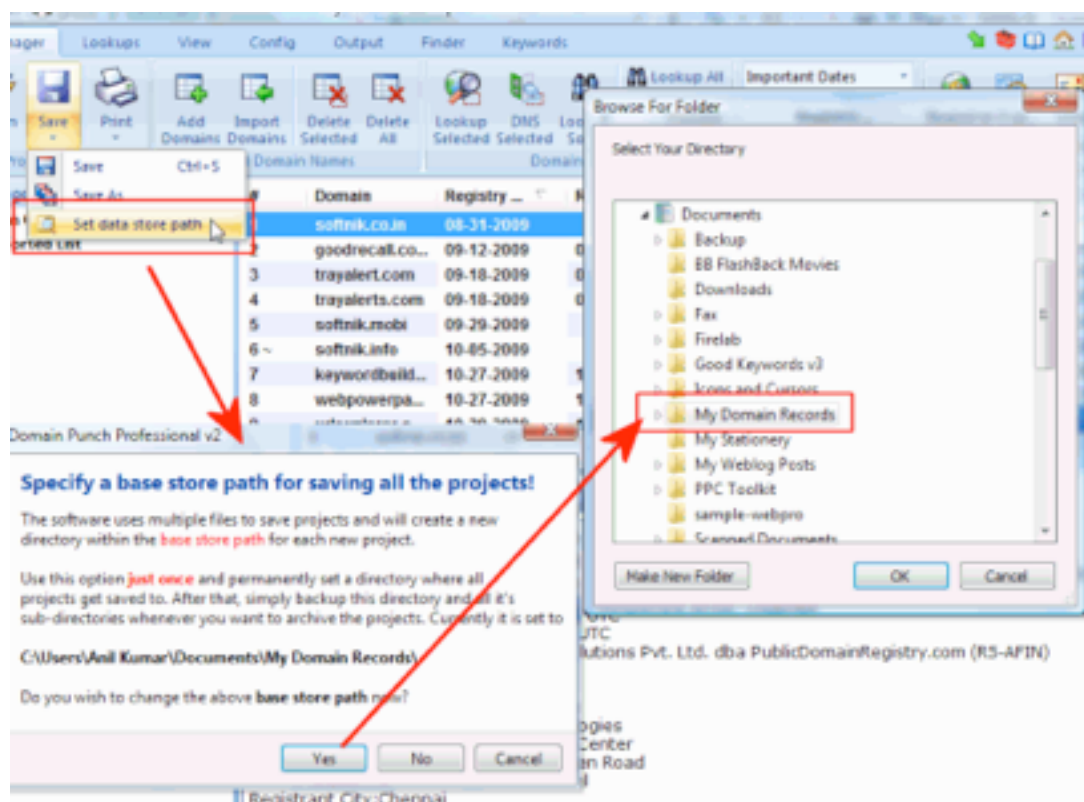
```
<?php print_r($_POST); ?>
```

Upload it to your server and change the URL in the **Web Forms Manager** to your test URL. Click the **Run** button and your script will display all the POST data values. Use it to find problems with the settings in **Web Forms Manager**.

## Saving, Loading Files, Copying and Exporting Data

**Domain Punch Professional v2** saves the documents as **projects**. You can save the entire data to different projects and load them again using the "Project > Save" and "Project > Open" menu options.

Each project consists of multiple files. So the software creates a directory for each one. You can specify a **data store path** which will become the root directory where all projects are stored.



It is best if you set the **data store path** just once. If you keep changing the **data store path** the software will end up creating projects at multiple locations and you will not be able to open the projects easily.

### Backing up your work

By default the data store path is "My Documents/Domain Punch Professional v2/"

So simply backup the above location (or wherever you have set the data store path to) whenever you want to archive your data.

## Copying Data to Clipboard

The **Output** ribbon tab has options for copying the data to the clipboard or to files on disk. Options for copying to the clipboard are also available by right clicking within the domain data table.

## Exporting / Printing Data

The **output** ribbon tab lists several options for exporting the data from the domain table. You can also print the domain table. Make sure that you adjust the column widths properly before printing (use the print preview while adjusting the column widths).

## Backup Whois Settings

To backup the **whois configuration** used by **Domain Punch Professional**, use RegEdit and export the following key.

```
HKEY_CURRENT_USER\Software\Softnik Technologies\Whois Setup v2
```

You can do this from command-line using something like the following

```
regedit /e "C:\Users\Home User\Documents\whoisbackup.reg" "HKEY_CURRENT_USER\Software  
\Softnik Technologies\Whois Setup v2"
```

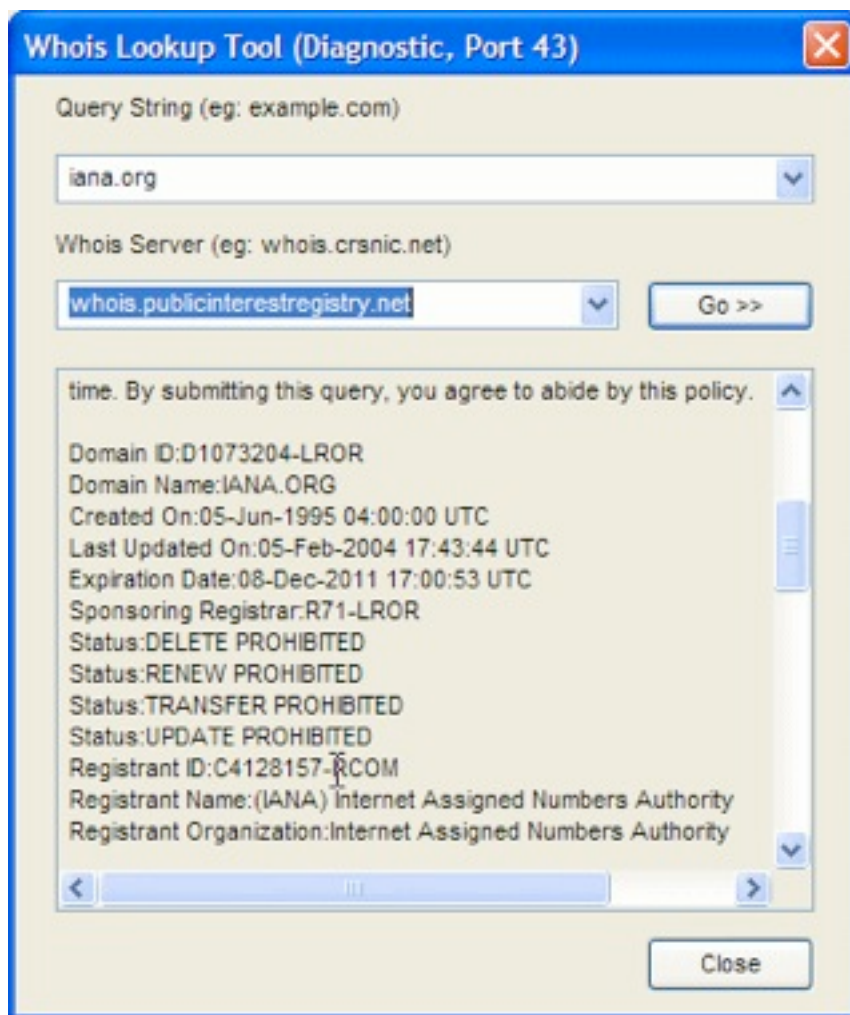
The above will export the **whois settings** key branch to a file called whoisbackup.reg in the directory specified. Remember to specify the file path for the ".reg" file properly.

---

## Diagnostic Port 43 Whois Tool

---

All our domain name software tools include a diagnostic port 43 whois lookup tool available from the **Config Tab > Popup Whois** ribbon button (**Tools > Popup Whois**



**Tool menu** in earlier versions). You can use this to quickly lookup a domain name or check if port 43 connections are working properly.

To check a domain name type in the whois server and the domain name into the appropriate boxes and then click 'Go'.

In some cases you can use the whois tool to determine the valid whois server for a country or top level domain by querying whois.iana.org. For example to find the whois server for query **whois.iana.org** for **it**. Now look through the whois output and you will find the whois server listed as “Whois Server (port 43): whois.nic.it”.

---

## Getting Additional Help / Support

---

You can get additional support by contacting us or checking our blog.

### Blog URL

<http://www.softnik.com/blog/>

### Contact Us

<http://www.softnik.com/icenter/contact.php>

### Domain Punch Professional Software Updates

<http://www.domainpunch.com/products/domainpunch/changelog.php>

---

## SEO Lab Professional

---

Advanced Competition Research, Keyword Idea Brainstorming and Marketing Software Suite for SEO Specialists. Available for Windows and Mac OS X.



<http://www.seolab.com/>